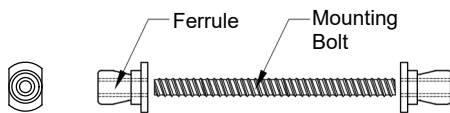
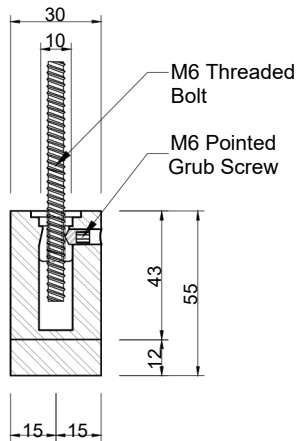
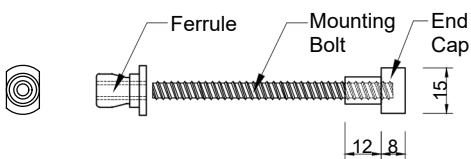


Composition: Maralina Door Pull
 SKU: MDP-400
 MDP-800

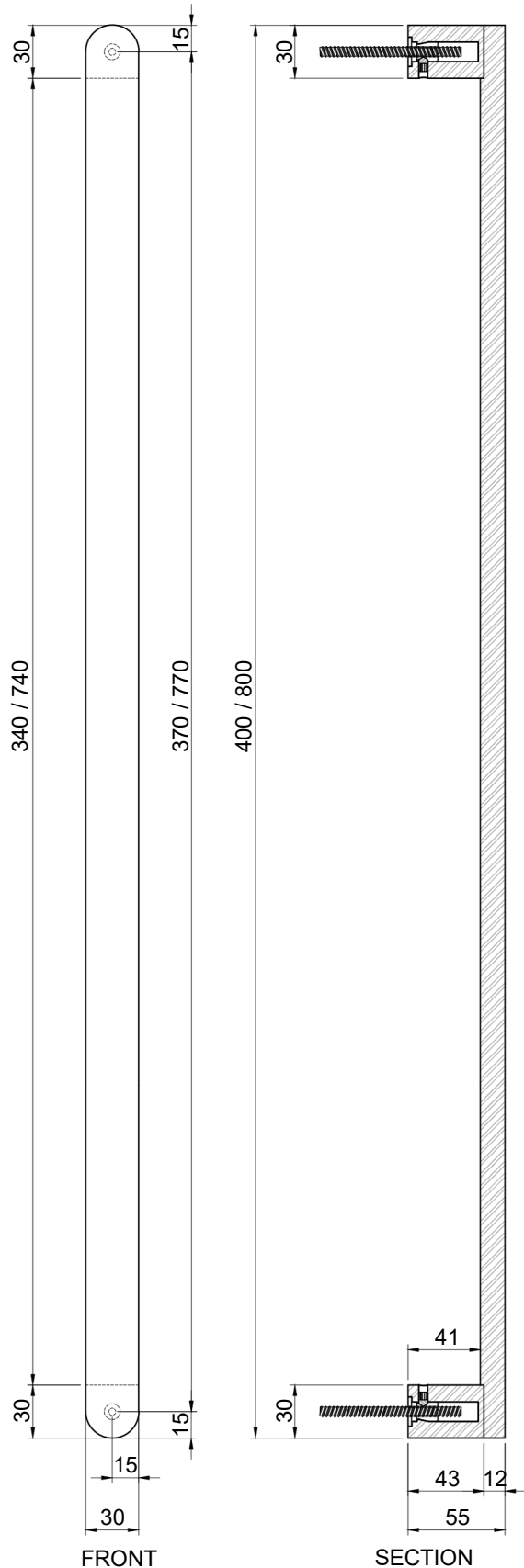
Maralina Door Pull is Designed and manufactured by Simone Pittella. It's form and function are cohesive to the contemporary Maralina design family. Produced in solid brass and available in various lengths and finishes, for back-to-back and single fix entryway applications or for use on integrated built in fridges and joinery.



BACK TO BACK FIXING KIT



THROUGH BOLT SINGLE SIDE



FRONT

SECTION