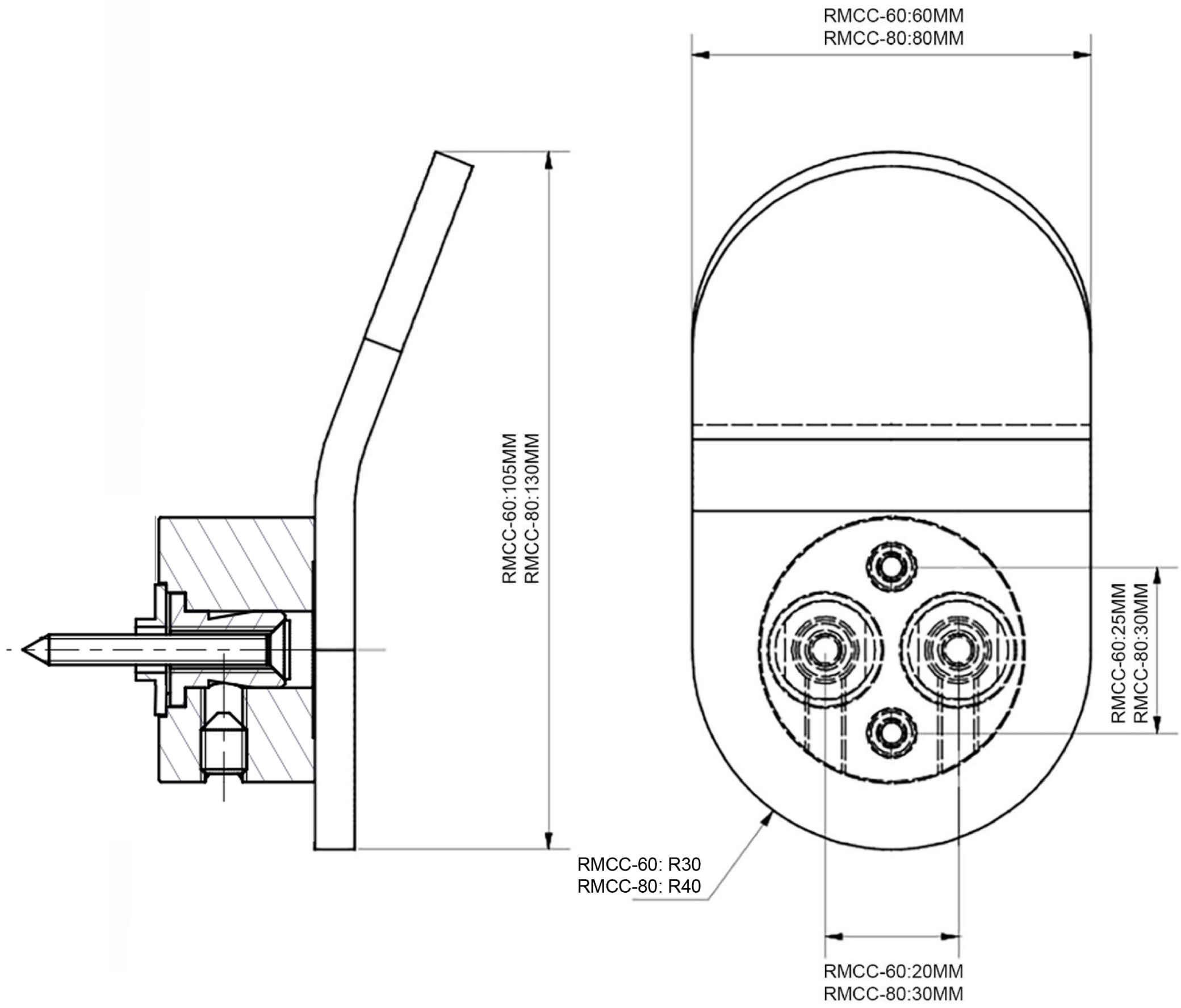


Note: Fixing system S0038-02 must be anchored to the appropriate internal timber/steel stud or solid core door set



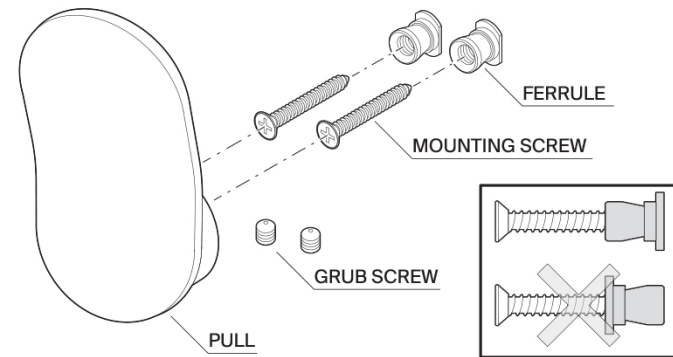
ARTICLE : RMCC-60 AND RMCC-80	
DESCRIPTION : COMO PULL	
MEASUREMENTS ARE IN MM	
Pittella®	DATE 27.11.20

Specifically designed and engineered for use on entry doors and internal swing doors. Product must be installed with the appropriate fixing system S0038-02 included. Available in 60 mm and 80 mm.

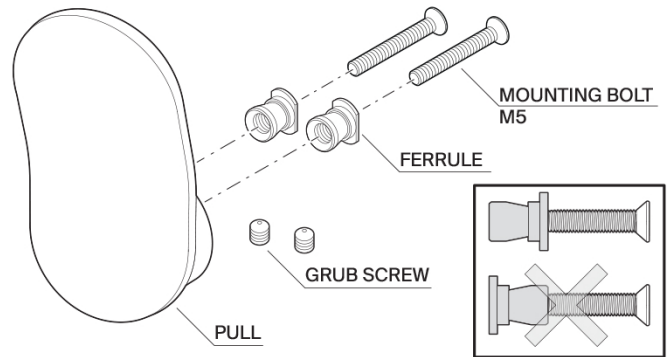
*Style : Contemporary
Collection : Otto Contemporary
Material : Brass CW614N
Design-Family : Maralina*



Surface Mounted



Through Fixed



Back To Back

